



## AIRCRAFT DISC WHEEL BRAKE SYSTEM - ITM 2\_MAIN WHEEL

MODEL: FDA-0600B\_B-EPA



**DESCRIPTION:**

5" LIGHT WEIGHT ERGAL WHEEL WITH A SPHEROIDAL CAST IRON DISC BRAKE ON TO LIGHT WEIGHT ERGAL SUPPORT WITH AN AXLE INSIDE IT.

**APPLICATION:**

0 - 115 Hp / 450 - 800 Kg (MTOW)

**MATERIAL:**

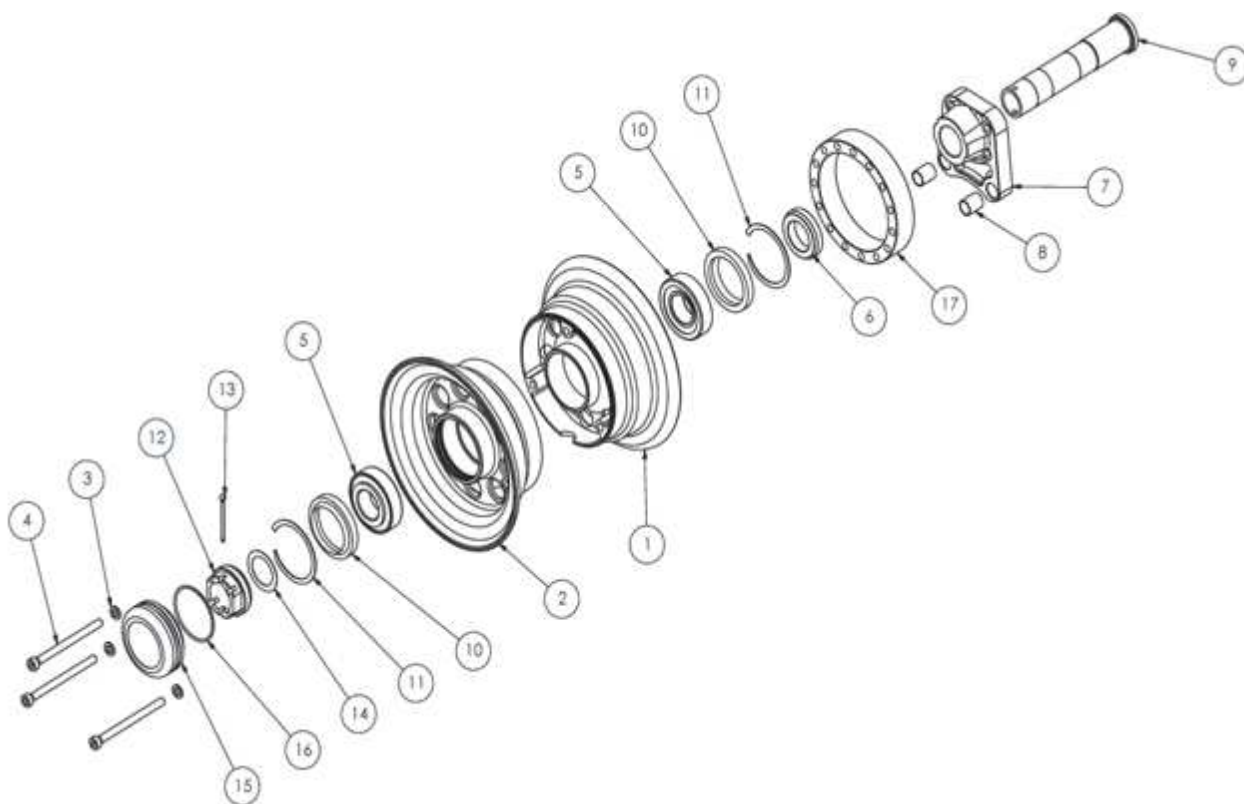
ERGAL 55 (7075), ANTICORODAL 6082, Stainless Steel

**HEAT TREATMENTS:**

Anodization

**PERFORMANCE:**

STC EASA APPROVED ON EVEKTOR AIRCRAFT





## AIRCRAFT DISC WHEEL BRAKE SYSTEM - ITM 2\_MAIN WHEEL

ASSY	SUB-ASSY	NR.	DESCRIPTION	PART NUMBER	Q.TY	MATERIAL	TECHNICAL SPECIFICATION	WEIGHT (gr.)	MARKING	TREATMENT	NOTE	SLL <sup>(1)</sup>
♦			<b>MAIN WHEEL AND AXLE</b>		<b>FDA-0600B_B-EPA</b>							
♦♦		1	INNER WHEEL HALF	FDA-0607MB-EPA	1	AL 7075 / 6082 / 2017	UNI 9006/4 UNI 9007/2 UNI 9002/2	444	yes	ANODIZING	Heat in the oven between 95° & 105°C to insert the conical bearing seat	OC <sup>(2)</sup>
♦♦		2	OUTER WHEEL HALF	FDA-0607FB-EPA	1	AL 7075 / 6082 / 2017	UNI 9006/4 UNI 9007/2 UNI 9002/2	440	yes	ANODIZING		OC <sup>(2)</sup>
♦♦		3	WASHER	CM_W6*11*1,5	3		DIN 433 UNI 6592 TC					OC <sup>(2)</sup>
♦♦		4	SCREW ALLEN	CM_TCCE6*80	3		10.9 or 12.9				Torque 12÷16 Nm	OC <sup>(2)</sup>
♦♦		5	TAPERED ROLLER BEARING CONE AND CUP	CM_SKF 30205J2/Q	2		ISO 355:1977				Apply a thin layer of Loctite52A41 <sup>(6)</sup>	OC <sup>(2)</sup>
♦♦		6	ADDITIONAL RING	FDA-0610-EPA	1	AL 7075 / 6082 /	UNI9006/4 UNI9007/2	18	yes	ANODIZING		OC <sup>(2)</sup>
♦♦		7	SUPPORT AXLE	FDA-0602B-EPA	1	AL 7075	UNI9007/2	213	yes	ANODIZING	Heat in the oven between 95° & 105°C to insert the axle	OC <sup>(2)</sup>
♦♦		8	BUSHING	FDA-1105-EPA	2	BRASS	SAE C-330	4,9			Apply a thin layer of Loctite52A41 <sup>(6)</sup>	OC <sup>(2)</sup>
♦♦		9	AXLE	FDA-0603-EPA	1	AISI 410 / 420 / OR >	UNI X40Cr14 or UNI X12Cr13	253	yes		Apply a thin layer of Loctite52A41 <sup>(6)</sup>	OC <sup>(2)</sup>
♦♦		10	RETAINER - GREASE SEAL	CM_GHS 157207	2							OC <sup>(2)</sup>
♦♦		11	CIRCLIP	CM_SB 52 or CM_VHM-52 or CM_602 52 SB	2							OC <sup>(2)</sup>
♦♦		12	MAIN NUT	FDA-0604-EPA	1	AL 7075	UNI 9007/2	30	yes	ANODIZING		OC <sup>(2)</sup>
♦♦		13	COTTER PIN	CM_CP 3,2*36	1		ISO 1234					OC <sup>(2)</sup>
♦♦		14	SHIM WASHER	CM_SW25*35*0,5	1		DIN 988 PS					OC <sup>(2)</sup>
♦♦		15	HUB CAP (if required)	FDA-0611-EPA	1	GRILLON or PVC or NYLON		33				OC <sup>(2)</sup>
♦♦		16	O-RING (if required)	CM_ORPK2-031	1	NITRILE	UNI EN ISO 3601					OC <sup>(2)</sup>
♦♦		17	SPACER	FDA-0612-EPA	1	AL 7075 / 6082	UNI 9006/4 UNI 9007/2	158	yes	ANODIZING		OC <sup>(2)</sup>
♦			<b>SUPPORT FAIRING</b>		<b>FDA-0616-EPA</b>							
♦			<b>PIN FAIRING</b>		<b>FDA-0620-EPA</b>							
♦			<b>SPACER TUBE FOR STRUT</b>		<b>FDA-0625-EPA</b>							

(1): Service Life Limit. (2): On Condition. (3): Operating Time Limit reported in the Maintenance Manual. (4): see drawings for details. (5) Pay attention to the type of tube and O-ring in accordance with the type of oil (DOT 4 or Fluid 41). (6): Loctite 52A43 Medium Strength Thread Locker, Loctite 52A41 Bearing.